

Top for Pipos Baha Cat

The pattern should be printed on A4 paper. If Letter size is used, make sure the pages are not resized during printing.



Fold the fabric, place the edge of the pattern marked as "FOLD" on the fabric fold, and cut the piece. Cut another piece from the lining fabric.

Place the pieces right sides together and sew the edges marked with a dotted line in the pattern. Leave an opening on either one of the vertical seams in the back. You can make the opening smaller than indicated in the pattern. Just make sure it is big enough to pull all the fabric through it.

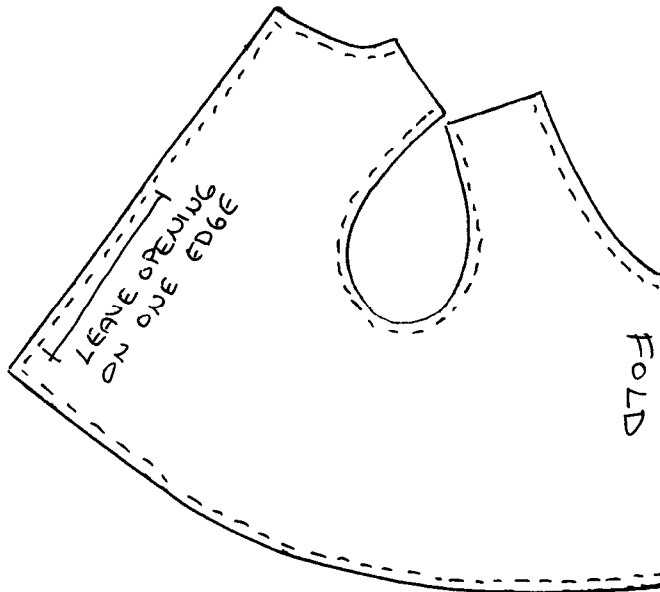
After sewing all seams, turn the garment right side out by pulling it through the opening. You can use a pen, knitting needle, small paintbrush handle, etc. to push all corners into correct shape.

Sew the shoulder seams. Sew the opening in the vertical back seam (on the right side in the photo) shut by hand.



Sew buttons or snaps for closing the back. The edges of the back pieces will overlap and the side with the hand-sewn part should go under the other one (to hide the hand-sewn part).

Sleeveless shirt



Upper part of a dress

You can use the pattern for making the top part of a dress. The only difference is in which edges to sew. In this case, leave the bottom open and sew the lower part there. The lower part could, for example, be a rectangular with gathering stitch in the upper edge.

