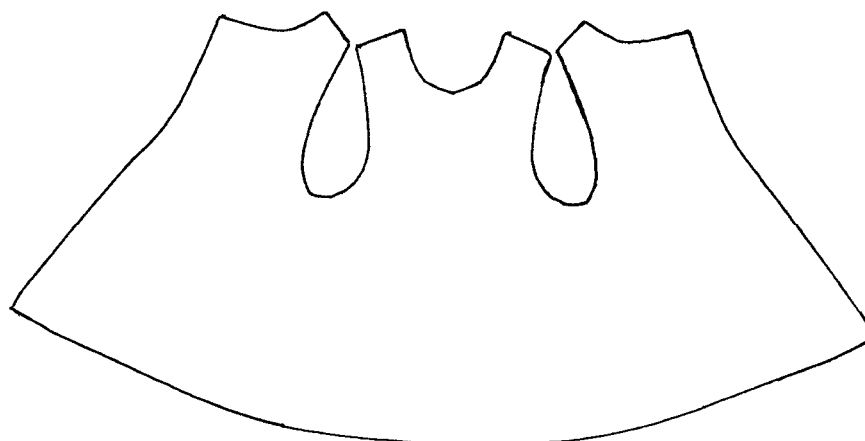


Dress for Pet Ari Bobo

The pattern should be printed on A4 paper. If Letter size is used, make sure the pages are not resized during printing.



Cut the piece from fabric and treat the edges with Fray Stop or similar fabric glue. Sew or glue the shoulder seams. You can close the back using the tail as it is magnetic and can be attached over the fabric, provided that the fabric is not too thick. You can also use a snap. Just make sure to check the tail position first (the snap should be above it).



This same pattern can also be used for making dresses for Mattel's Kelly/Shelly dolls.