

## Patterns for Tonner's 11" Miss Piggy

These patterns were made for printing on A4 size paper, but you should get correct result on Letter size paper also, if you do not resize the pages during printing (there should be a resize option somewhere in the Print dialog, make sure it is not selected).

The patterns are first versions and may require some adjustment during sewing.

When the pattern has the word "Fold," fold the fabric in half and place the indicated edge to the fold.



**Dress 1**

This is the simplest dress with just 3 pieces. This dress is best done with stretchy fabric.

The dress in the photo was done without lining, just turning the top and bottom edges.



**Dress 1 (variation)**

The upper part of this one was made with the same pattern as the first one, just shorter. The fabric was really thick, so the edges were not turned, but treated with Fray Stop to prevent fraying. The lower part is a rectangular piece of ruffled fabric.



**Dress 2**

This is very similar to the first one, but the front is done with 3 pieces to make the bust fit better. This is better when using fabric that does not stretch.

The dress in the photo has lining done using the same pattern pieces.

Sew the vertical seams first. The back seam should be last of them, so you can remove any excess from the back pieces and check how far down the back opening should go.



**Dress 3**

This dress has front opening all the way down. The one in the picture is closed with 3 snaps, but the dress would look good with a row of working buttons.



**Top and trousers**

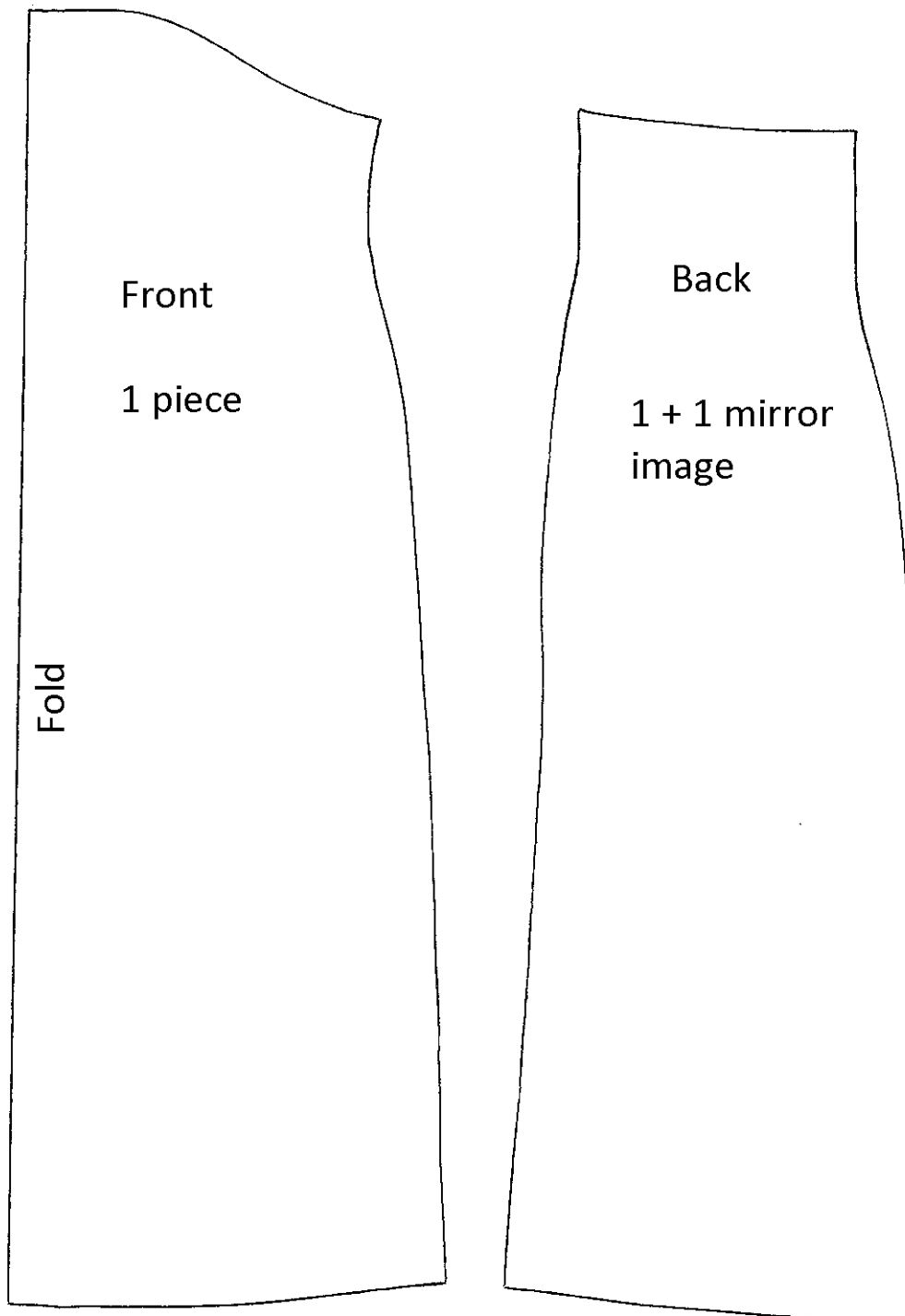
The top has opening in the back and so do the trousers. The top pattern does not include seam allowances for neck and arm holes, so if you want to turn the edges or use lining, add the allowances when cutting the pieces.



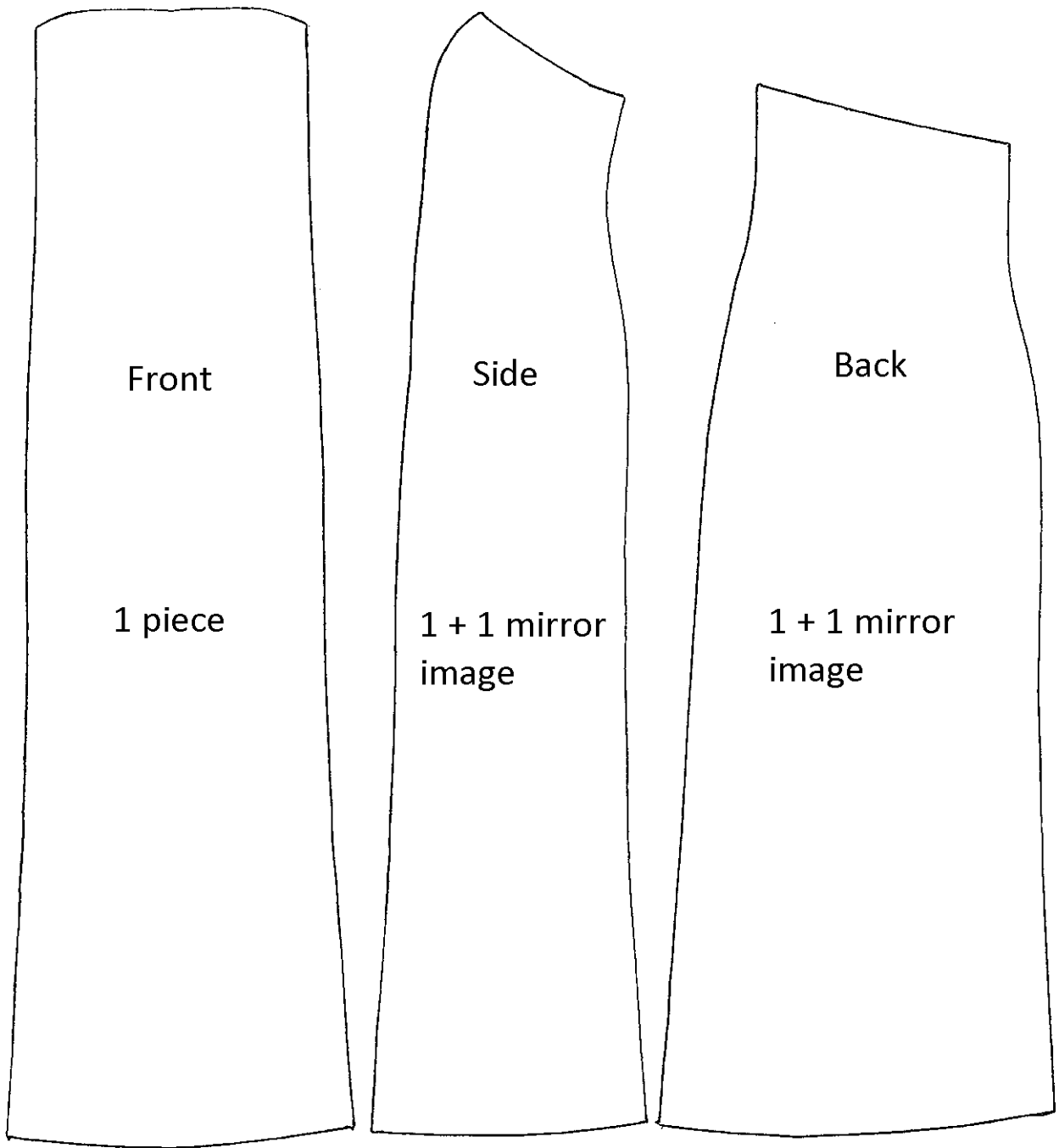
**Jacket and trousers**

The jacket is the only one that requires lining, because that is the only way to get neat edges in front. The jacket in the photo has lining only in body, not for sleeves.

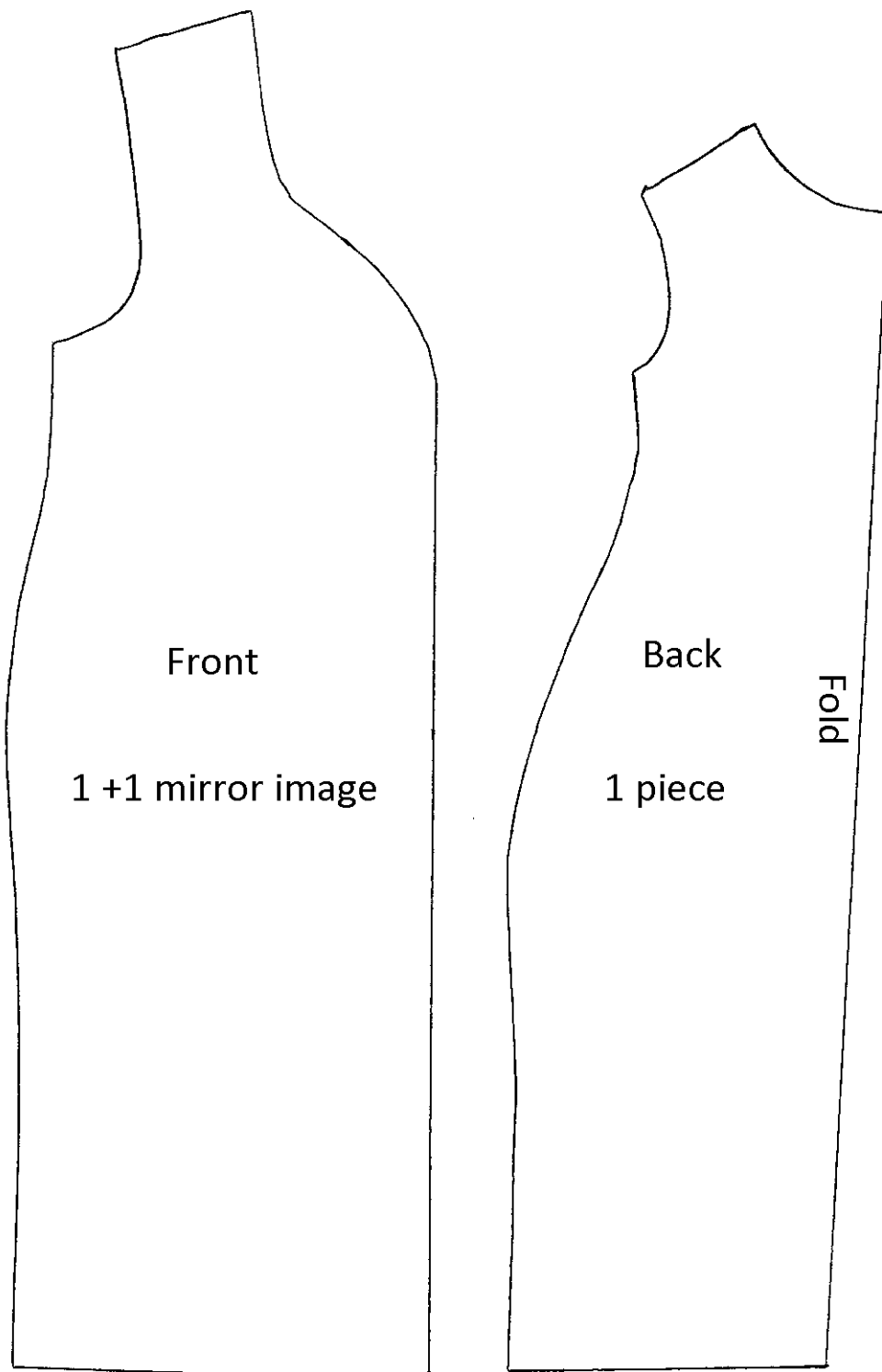
# Dress 1



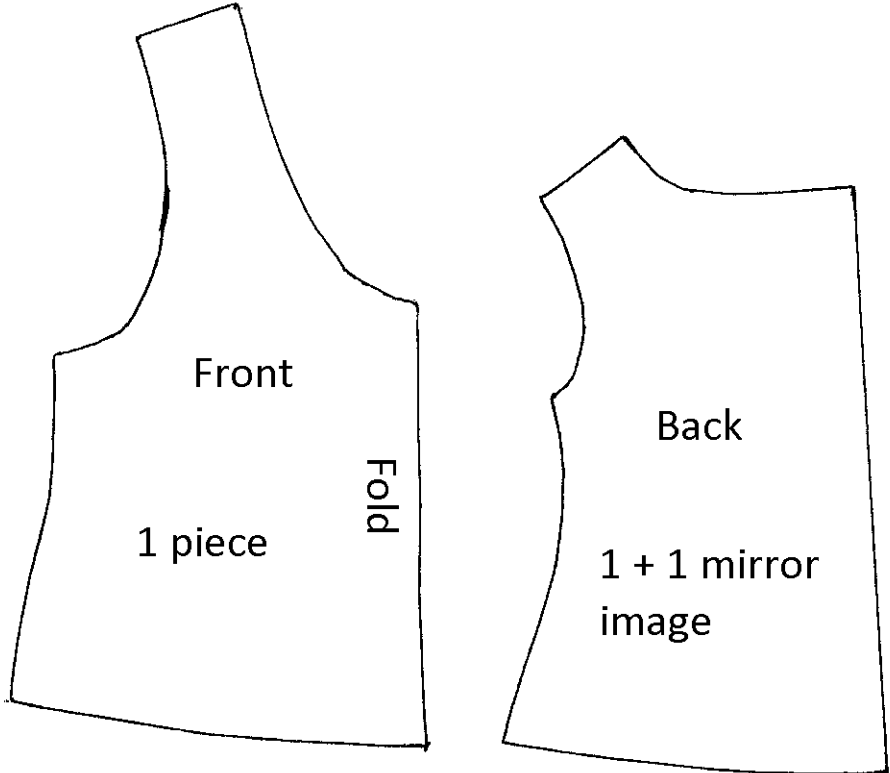
## Dress 2



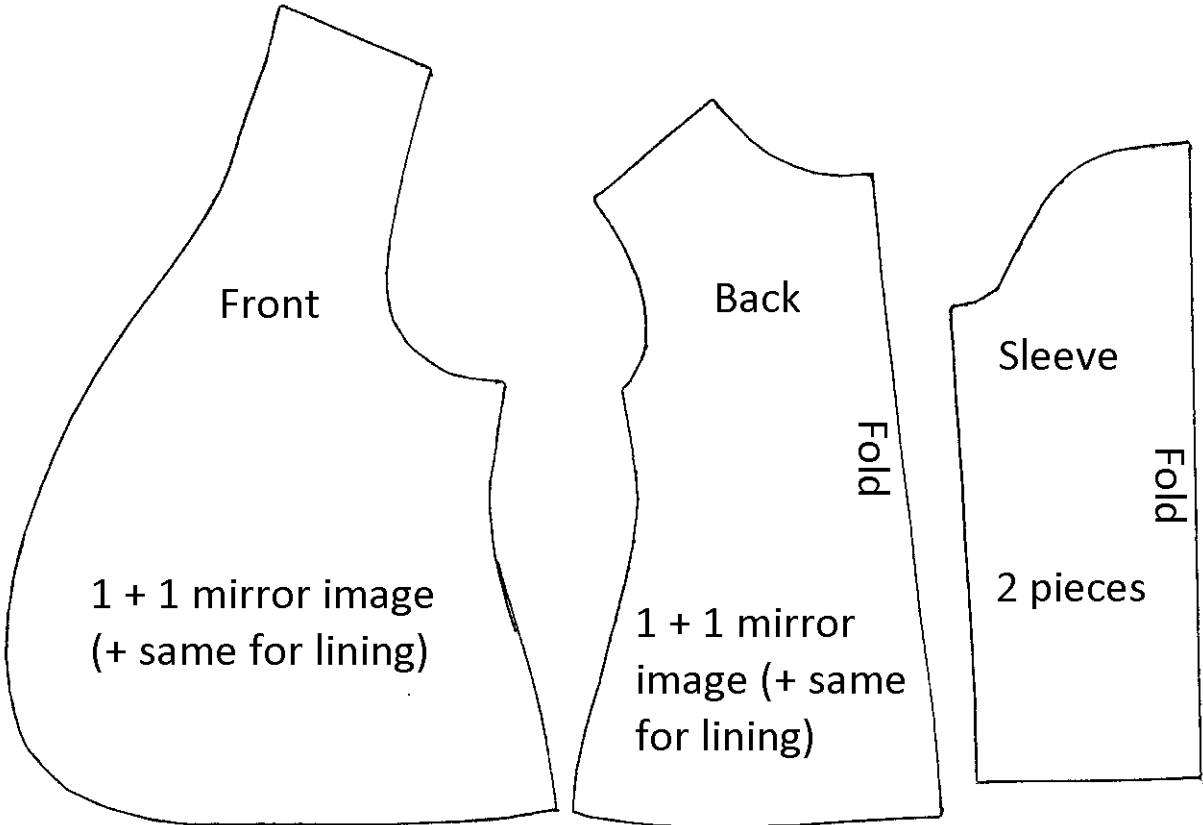
# Dress 3



**Top**



**Jacket**



Trousers

